

PEO Undersea Warfare Systems ***Expanding Undersea Dominance Overmatch***

Naval Submarine League 2023 Symposium

CAPT Todd Weeks

Program Executive Officer, Undersea Warfare Systems

8 November 2023





DELIVERING UNDERSEA DOMINANCE

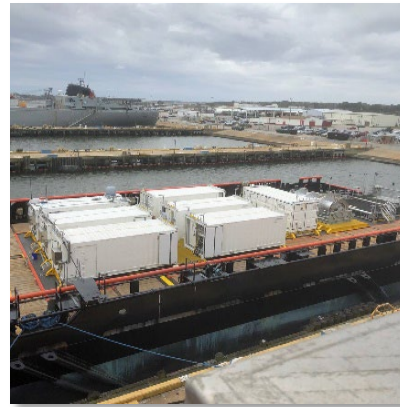
- **Build** capacity to deliver torpedoes, countermeasures, payloads and sensors to the fleet
- **Reduce** modernization timelines to increase operational availability
- **Expand** undersea dominance with faster deployment of enhanced capability through a resilient and modern architecture

We execute by:

- **Sharpening** our focus on the basics to enhance lethality for 2025 and 2027 challenges
- **Driving** risk-based decisions with TYCOMs to move faster
- **Refining** our understanding of the supply chain and **engaging** with industry as partners to foster resilience



MK 54 MOD 0/1



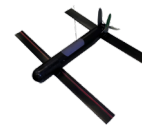
SURTASS-E



SPHERE ARRAY



CHIN ARRAY

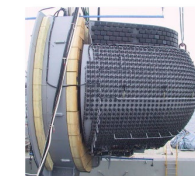


SLUAS



SONAR Display Consoles

LAB Array



LVA

Submarine Bridge Trainer



Submarine Attack Center Trainer

PEO UWS: Delivering Undersea Dominance

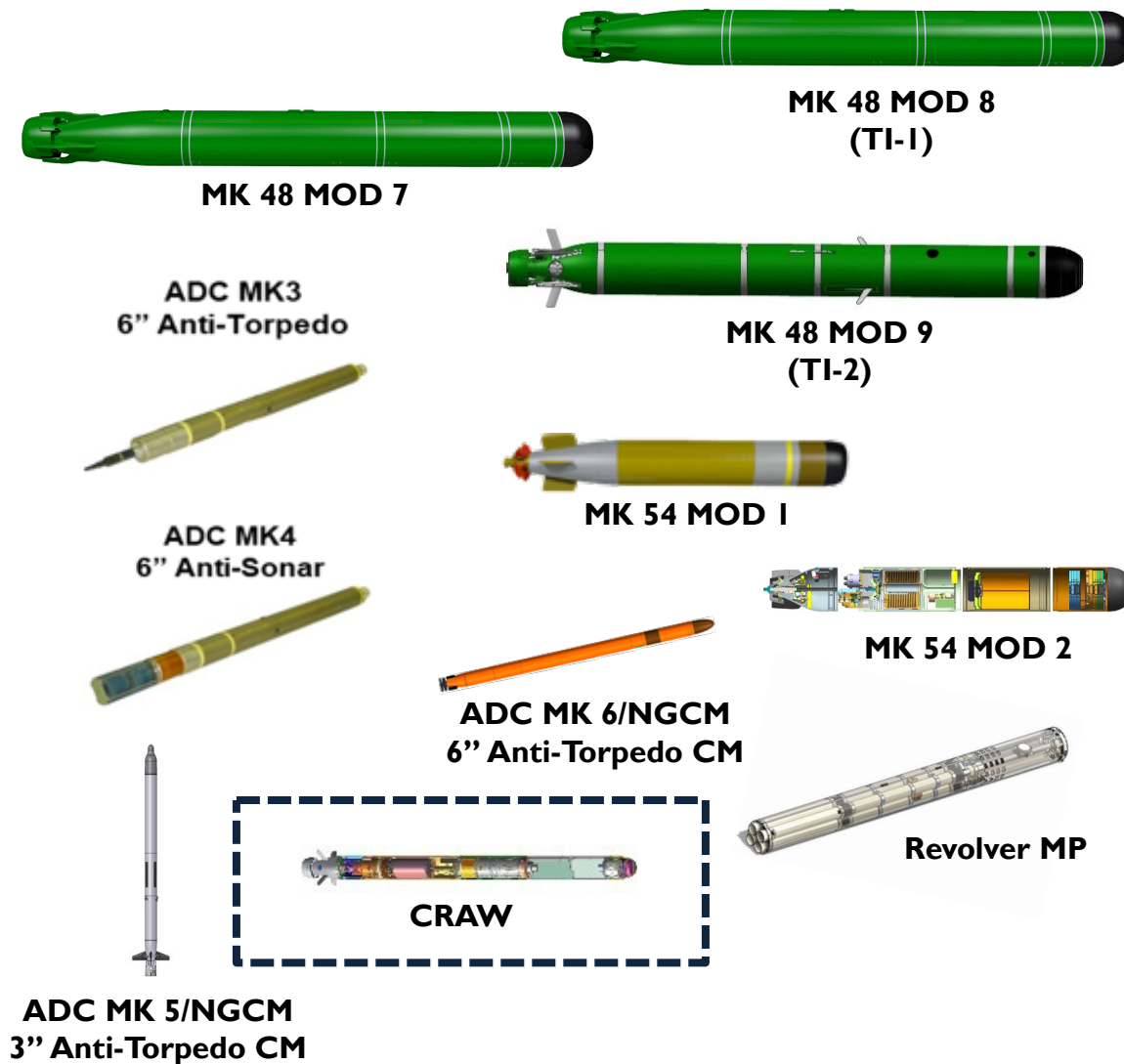


UNDERSEA LETHALITY: MORE & BETTER

- **Build** capacity to deliver torpedoes, countermeasures, payloads and sensors to the fleet
- **Reduce** modernization timelines to increase operational availability

Meeting the 2025 and 2027 challenges through:

- Enhanced torpedo family **capability** with expansion of the engagement envelope and enhanced targeting opportunities
- Increased weapon **capacity** by restarting cold production lines
- Hard kill kinetic options to deter, defend against, and defeat modern threats with tools like **CRAW**
- Collaboration with our closest allies and partners on weapon deployment dispersal to complicate the adversary's battleplan





CAPABILITY DEPLOYMENT: *FASTER*

- **Expand** undersea dominance with faster deployment of enhanced capability through a resilient and modern architecture

Attacking the delta between our most capable and least capable submarines to:

- Deliver secure, resilient, and modern capabilities across the fleet
- Standardize data architecture with common enterprise specifications and deploy hardware that's agnostic and clustered
- Establish in-depth cyber defense to automatically isolate and eliminate threats to stay in the fight
- Increase the lethality of Project OVERMATCH by serving as a critical node to close kill chains
- Add longevity and stability to operator interfaces

“The journey of change must continue to strengthen our national security and our warfighting advantage.”
General C.Q. Brown, CJCS



Photonics Mast



Enhanced Control Display Workstations

ESM BLQ-10





QUESTIONS?

